

Experience Minnesota Via The 21st Annual Minnesota School Social Workers Association Summer Institute June 12–14, 2023

Chase on the Lake Resort, on Leech Lake in Walker, MN
Less than 4 hours from the Twin Cities!



School Mental Health: Social Emotional Strategies That Work!



Earn
Up To
15 CEUs!!
*Clinical & Cultural
Responsiveness
Sessions,
Available*



The 12 possible CEU's are comprised of:
7.5 Clinical CEU's, 3 Cultural Responsiveness CEU's & 4.5 Social Work CEU's

CONFERENCE AGENDA

All meetings held at Chase on the Lake in the Walker Ballroom on the Lower Level.

Monday, June 12, 2023 8:00 am - 10:00 pm	
8:00 am to 9:00 am	Pre-Registration (Ballroom Foyer)
9:00 am to 11:00 am	<i>Pre-Conference Movie Screening & Discussion: "Wake UP: Stories From the Front Line of Suicide Prevention": Dan Porter, MSW, LICSW</i> <i>2 Social Work CEU's</i>
11:00 am to 12:30 am	Registration/Lunch on Own
12:30 am to 12:45 pm	Welcome / Introduction and Overview of the Days Ahead
12:45 pm to 2:15 pm	Reclaiming Resilience: Linnea Devine, MSW, LICSW, CCFP & Allie Taylor, M.Ed <i>1.5 Clinical CEU's</i>
2:15 pm to 2:30 pm	Break
2:30 pm to 4:00 pm	In Their Words: Amplifying Student Voice to Address DEI and Well-Being: Jake Sturgis, B.A., A.P.R. & Benji Perez Gonzalez <i>1.5 Cultural Responsiveness CEU's</i>
4:00 pm to 5:30 pm	Room Check-In / Break
5:30 pm to 7:00 pm	RECEPTION (Hors D' Oeuvres & Cash Bar) - (Optional) - Prizes/Networking Bingo (Ballroom Foyer) <i>1 Social Work CEU</i>
7:00 pm to 10:00pm	Karaoke (Optional) in "The 502" Bar Area
Tuesday, June 13, 2023 8:00 am - 6:30 pm	
8:00 am to 9:00 am	Breakfast Buffet - Included/Networking Breakfast (The 502 Fireside Restaurant)
9:00 am to 12:00 pm	Whether We Like It Or Not...Schools Are Changing. And We Must Too: Anne Gearity, PhD, LICSW <i>3 Clinical CEU's</i>
12:00 pm to 1:00 pm	Lunch—Included (The 502 Fireside Restaurant)
1:00 pm to 4:00 pm	Whether We Like It Or Not...Schools Are Changing. And We Must Too:...Continued <i>3 Clinical CEU's</i>
5:30 pm to 6:30 pm	Lakeside Beach Bonfire with Smore's (Optional) (bring drinks & blanket or lawn chair)
Wednesday, June 14, 2023 8:00 am - 12:45 pm	
8:00 am to 9:00 am	Breakfast Buffet - Included/Networking Breakfast (The 502 Fireside Restaurant)
9:00 am to 10:30 am	Cringe!: Brad Hanson, LICSW <i>1.5 Social Work CEU's</i>
10:30 am to 10:45am	Break
10:45 am to 12:15 pm	Restorative Justice: A Meaningful Response When Students Cause Harm: Cynthia Prosek, MA <i>1.5 Cultural Responsiveness CEU's</i>
12:15 pm to 12:45 pm	Closing / Evaluation & Wrap Up

21st Annual MSSWA Summer Institute

School Mental Health: Social Emotional Strategies That Work!

Featured Pre-Conference Session: Monday, June 12th, 9:00am - 11:00am

Pre-Conference: Movie Screening & Discussion: “Wake UP: Stories From the Front lines of Suicide Prevention”: Dan Porter, MSW, LICSW



Wake Up interweaves the stories of four very different communities affected by suicide — college students, veterans, the LGBT community, and gun owners. Rather than laboring on tragedy and despair, Wake Up focuses on the leaders on the frontlines of prevention, leaving viewers feeling hopeful, informed, and encouraged. It also powerfully illustrates how positive change can be achieved when compassion is practiced over prejudice — an important and timely lesson.

The film features interviews from a number of politicians and leading experts (including Congressman Joe Kennedy and Dr. Thomas Joiner), and is the first and only film to follow the cutting-edge preventative measures being taken by the Harvard School of Public Health. ***This session meets the MN Board of Social Work's requirement of 2 accredited social work hours.***

“Wake Up” Trailer: [\(90\) Wake Up - We Are One Trailer - YouTube](#)
“Wake Up” Website: [WAKE UP: Stories From The Front Lines of Suicide Prevention | Roco Films](#)



Danny Porter, MSW, LICSW, Dan serves on the Executive Board and Region 10 Rep for (MSSWA) Minnesota School Social Workers Association He is a District School Social Worker for Northeast Metro Intermediate School District 916 on special assignment to incorporate mental health initiatives district-wide, along with community partnership and grant initiatives. He is the Board President for (MACMH) Minnesota Association of Mental Health and has over 20 years of experience working with children, adolescents, and their families in public, residential, hospital, and day treatment programs. Additionally, Dan provides Group and Individual Clinical Supervision to Social Workers for the Profession Matrix throughout MN and provides individual and couple virtual therapy with Betterhelp. He received his B.A. in Social Work and Sociology, his master's in clinical social work, and has a Director of Special

Education License. He has presented at numerous conferences throughout Minnesota on topics such as: Supervision and ethics, strategies for supporting youth, promoting self-esteem, and school-based social skills programs. He was an examination item writer for Association of Social Work Boards (ASWB) and he has been published multiple times in the School Social Work Journal. Porter was named Minnesota School Social Worker of the year in 2012. Dan and his husband Tony are adoptive parents of three amazing boys with special needs.

Please Join us for our Annual Welcome Reception

Monday, June 12, 2023

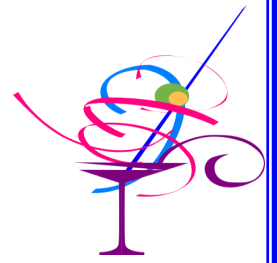
5:30pm to 7:00pm

Walker Ballroom Foyer

Free Hors D' Oeuvres & Cash Bar

Prize Drawings and Raffle

Networking Bingo & Great Conversation—Earn 1 CEU!!



21st Annual MSSWA Summer Institute

School Mental Health: Social Emotional Strategies That Work!

Featured Sessions

Monday, June 12th, 12:45pm - 2:15pm

Reclaiming Resilience

Addressing systemic & individual wellness by creating a space to name impact of compassion fatigue, dehumanization and burnout on school staff & effective strategies to rehumanize educators. *This session meets the MN Board of Social Work's requirement of 1.5 accredited clinical content hours*

Learning Objectives

- ⇒ Participants will be able to facilitate implementation of new practices to decrease feelings of burnout, dehumanization, and compassion fatigue
- ⇒ Participants will be able to identify specific challenges & stressors to individuals working within the education system
- ⇒ Participants will have access modules to utilize in school systems (both leadership & school staff) to improve staff wellness, student engagement & overall community



Linnea Devine, MSW, LICSW, CCFP, Linnea Devine, is a Licensed Clinical Social Worker by the State Of Minnesota. She is a Mental Health Therapist for her private practice The Holding Space, Certified in Compassion Fatigue Therapy, Board Approved Behavioral Health Supervisor for the State of Minnesota, Trained in Restorative Practices, Accelerated Resolution Therapy(ART), Trained in Dare to Lead™ and TF-CBT(Trauma Focused Cognitive Behavioral Therapy). Linnea is also a Senior Mental Health Specialist with Metropolitan Educational Cooperative Service Unit, where she works on a multidisciplinary team to enhance, coach, and provide mental health supports to educators, administration and students impacted by the residual effects of the COVID-19 Pandemic and mental health symptoms impacting their day to day lives. For the past 11 years, Linnea was also a School Social Worker for a Federal Setting Level 4 School District supporting mental health and behavioral concerns for students.

During her time in the schools she also focused much of her work on supporting, advocating, and wellness strategies specific for the unique impact on educators mental health, secondary trauma and compassion fatigue. She is passionate and dedicated to supporting educators in the school system so that they can do what they do best : teach to our students' hearts and minds



Allie Taylor, M.Ed., is a licensed special education teacher who was formerly an institutional juvenile probation officer in an environment where she noticed a strong need for mental health support for youth. Many of her students had individualized education plans (IEP) and were not attending school or were enrolled in an Intermediate school district. She returned to school to obtain her master's degree in special education because she wanted to work with youth in a more proactive way. She became a teacher at a Federal Setting IV school and was instrumental in creating the Educational Mental Health Classrooms (EMHC), designed to support students who have experienced significant trauma and need more support regarding their mental health and educational needs. Allie has a passion for education and wellness among students and school staff. She has personally experienced the effects of the job and has seen the impacts on her and her colleagues. Her current position is Mental Health and Social Emotional Learning Support Professional at Metropolitan Educational Cooperative Service Unit. She is a multidisciplinary team member with the mission of serving educators in the Metro area in order to develop their creative capacities to effectively support youth as they maintain their sense of self, wellbeing, and passion.

Summer Institute Participants Will...

Learn about evidence-based interventions; incorporate programs/techniques learned into daily practice; develop a network of colleagues that can support the implementation of evidence-based practice.

Please encourage your colleagues to attend! Content will be focused to support school social workers, but other colleagues in the field will benefit as well!

21st Annual MSSWA Summer Institute

School Mental Health: Social Emotional Strategies That Work!

Featured Sessions

Monday, June 12th, 2:30pm - 4:00pm

In Their Words: Amplifying Student Voices to Address DEI and Well-Being

How can the power of Student Voice serve as a catalyst for building a safer, more equitable and inclusive learning environment? Our communities continue to struggle with hardship, inequality, prejudice, and mental health. Students have personal experiences they need to share about these issues. Learn how Minnesota schools have leveraged student voice and video to create professional development tools that address these challenging subjects. From discussing classroom inequities to sharing powerful stories of connection, students share “in their words” what they need from the adults to address DEI and support their well-being. *This session meets the MN Board of Social Work’s requirement of 1.5 Cultural Responsiveness hours*

Learning Objectives:

- ⇒ Participants will hear from students about their experiences and insights into topics of engagement, diversity, equity, inclusion, mental health and explore the effects on ourselves, our students and our culture
- ⇒ Participants will acknowledge and investigate how we can address barriers of privilege and inequity in our schools
- ⇒ Participants will commit to improved ways they can develop authentic relationships with students, promote a sense of community, and establish a safe learning environment so that meaningful learning and stronger relationships result



Jake Sturgis, B.A., A.P.R., worked for two school districts in the Twin Cities for nearly 12 years prior to starting Captivate Media + Consulting in 2014. He leads a team of 12 cinematographers, editors, graphic designers and strategists who craft stories that ignite community change. They combine the art and science of video, animation and graphic design to create content that is effective and memorable. Jake served on the Minnesota School Public Relations Association (MinnSPRA) Board from 2015-2019, including one year as President. He also served as a board member for the Minnesota Chapter of the Public Relations Society of America (PRSA) from 2019-2021.



Benji Perez Gonzalez, is a highly skilled professional who has worked in the media and consulting industry for the past seven years. He began his career at Captivate Media as a Cinematographer, where he quickly gained recognition for his award-winning work for clients. Over the years, Benji honed his craft and expanded his skillset, allowing him to take on new challenges. Currently, Benji serves as the Project Coordinator for DEI where he plays a critical role in amplifying student voices and promoting equity in education. Through his work, Benji helps students and educators create more inclusive and welcoming environments in their schools.



****A Summer Institute Favorite****
MSSWA “Sponsored” Karaoke in
“The 502” Bar Area
Monday, June 12th, 7:00pm to 10:00pm
(Immediately following the Welcome Reception)



Come relax and unwind, have a beverage of your choice, and wow us with your vocal stylings!

21st Annual MSSWA Summer Institute School Mental Health: Social Emotional Strategies That Work!

Featured Keynote Session

Tuesday, June 13th, 9:00am - 4:00pm

Keynote: Whether We Like it or Not...Schools are Changing. And We Must Too

Education has been remarkably stable for over 100 years, built on a model that fit the industrial needs of our nation: workers who acquired skills that fit the work needs of a given community. Sometime in the later 20th century the needs shifted from more physical labor to increasing access to knowledge-based skills. But COVID exposed how faulty our current approaches to learning have become. Not all children learn in the same way, and at the same pace. There is decreasing need to memorize facts (thank you, google search). Technology is not the enemy but a core tool. Critical and even innovative thinking is much more critical than compliant performance. Specialization may happen sooner than later. Artificial intelligence is here, and will there be a place for the humanities? Diversity of experiences is more and more essential, even as some parts of the larger community may resist; this diversity demands that students and teachers appreciate divergent identities, points of view and needs.

And in this changing culture, teachers are increasingly scarce. COVID burnout took a toll but is there more to understand about what teachers need to be effective and satisfied?

To the important question: how will school social workers be useful, even essential, in this changing landscape of education? How do our models of learning and adaptation, fit with the demands ahead?

This workshop is a chance to be visionary, to be reflective and to be brave. Rather than remain secondary citizens within schools, what if social workers became leaders, able to provide direction and support for change? Join me in thinking big ideas. ***This session meets the MN Board of Social Work's requirement of 6 clinical content hours.***



Anne Gearity, PhD, LICSW, is a clinical social worker with over four decades of experience working with children, teens and families. She started her career as a school social worker in Minneapolis, working in an experimental early childhood program. She has then worked in hospitals, agencies and independent practice. Currently, in addition to her community mental health practice, she is faculty in the department of psychiatry and behavioral health, U of MN Medical School; she continued to provide consultation at Washburn Center for Children, where she pioneered Developmental Repair, a model for work with at risk children; and she also consults with the Hennepin Health Mother/Baby program. She is winding down her consulting work and looking forward to spending this time with her school social work colleagues.

Beach Bonfire by the Lake on Tuesday!



Come enjoy a bonfire overlooking the lake with your colleagues, new and old friends alike. We will supply the Smore's supplies (Chocolate bars, marshmallows and graham crackers), you bring your beverage of choice and a blanket or chair. Come and join the fun!



Tuesday, June 13, 2023 (5:30pm to 6:30pm)
Resort Lakeside Firepit



SAVE THE DATE!

MSSWA 2023 Fall Conference

October 9-10, 2023

Sheraton Minneapolis West Hotel, Minnetonka, MN

21st Annual MSSWA Summer Institute

School Mental Health: Social Emotional Strategies That Work!

Featured Sessions

Wednesday, June 14th, 9:00am - 10:30am

Cringe!

Cringe, embarrassed, mortified, we've all been there and we know that the fear of these emotions can be at the center of an adolescents world. In this fun yet serious inquiry we will discuss all things embarrassing, focusing on why these incidents have such a stronghold on our students (and our own) behavior as well as memory. We will also discuss the ways we can ease the fear of these emotions as well as the intensity of the "cringy" memories. Come prepared to laugh and clinically explore this important topic. *This session meets the MN Board of Social Work's requirement of 1.5 accredited social work hours.*

Learning Objectives:

- ⇒ Participants will develop an understanding of the emotions related to embarrassment
- ⇒ Participants will deepen their knowledge of how embarrassment manifests developmentally and neurologically in adolescents
- ⇒ Participants will learn new strategies for helping to process and mitigate the negative impacts of embarrassment



Brad Hanson, MSW, LICSW, is a proud social worker who has worked in a variety of educational settings over the last 25 years. Currently he is the Student Services Manager at MERC and Loring Nicollet Alternative schools, primarily providing counseling and therapy for students and consultation for educational staff. Brad is a believer in developing deep relationships buttressed with a strong knowledge base of client and practice. In addition to his work in alternative Brad has been an Adjunct Professor at Augsburg University for 20 years and maintains a robust supervision practice.

Wednesday, June 14th, 10:45am - 12:15pm

Restorative Justice: A Meaningful Response When Students Cause Harm

Restorative Justice (RJ), an approach to resolving harm, is growing in acceptance as a way to transform school climates. While there is increasing interest in restorative justice in the school setting, is everyone talking about the same thing? Is there a common understanding and language for restorative justice? How can RJ be adapted to the school environment? This interactive presentation will answer these questions directly for school professionals. *The success of RJ in the school setting is well-documented. For example, Oakland, California began using RJ at a middle school in 2006. The school saw an 87% decrease in suspensions, with a corresponding decrease in violence. This session meets the MN Board of Social Work's requirement of 1.5 Cultural Responsiveness hours.*

Learning Objectives:

- ⇒ Participants will learn the history, philosophy and principles of restorative justice and restorative practices, including the similarities and differences between retributive justice, restorative justice, transformative justice and mediation
- ⇒ Participants will examine the role of RJ in responding to systemic racism and racial disparities
- ⇒ Participants will consider applications for RJ in the school setting—including prevention, intervention, and re-integration



Cynthia Prosek, MA, has over 20 years of restorative justice practice. As Executive Director of Restorative Justice Community Action (RJCA), Cynthia leads a trajectory of growth, expanding services and deepening community engagement in restorative justice practices. She draws on the knowledge and wisdom of the community, collaborating with a network of volunteers, leaders, and agencies for a strong, vibrant, and diverse Twin Cities community. Cynthia promotes and helps to implement new programming from a lens of race equity as the means to transform the criminal legal system and redefining public safety as rooted in community. RJCA has hosted BSW and MSW interns for the Youth Program since 2014 under Cynthia's task supervision in partnership with RJ colleague, Michele Braley, from Seward Longfellow RJ providing licensed supervision.

Location & Lodging Information

Chase On The Lake
502 Cleveland Blvd
Walker, MN 56484
Reservations: Call 1-888-242-7306
Resort Direct: (218) 547-7777
Website: www.chaseonthelake.com

Located in central MN on Leech Lake, off Hwy 371
(Less than 4 hours from the Twin Cities)
Please see official website for more detailed directions.

Each Institute participant will be responsible for their own lodging, taxes and fees. A deposit for reserving a room may be required. Chase On The Lake has accommodated the Institute by offering a discounted rate for the allotment of rooms set aside.

Reservations must be made by Friday, May 12, 2023 for guaranteed rate.

Classic Hotel Room, \$129/night
Lake View Hotel Room, \$159/night
2 Bedroom Classic Condo, \$269/night
2 Bedroom Lake View Condo, \$299/night
+ Room Tax of 8.875%

Request MSSWA Summer Institute prices and [Room Block #149343](#) when registering.

To make a reservation call 1-888-242-7306.

Check in is at 4pm, check out is at 11am

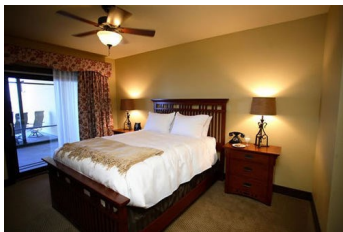


Special Features

- ⇒ 10% off On-Site Aveda Copper Door Spa Services for all attendees
- ⇒ Complimentary Wireless Internet throughout resort
- ⇒ One block from charming downtown Walker, with unique boutiques and dining options
- ⇒ 45 minutes from Itasca State Park, headwaters of the Mississippi River
- ⇒ Lakeside Beach Fire Pit reserved for MSSWA Tuesday evening
- ⇒ Free Welcome Reception and Karaoke Event
- ⇒ Guests can enjoy indoor pool, hot tub and sauna as well as an on-site fitness center
- ⇒ Bike and watercraft rentals are available

Location

Chase on the Lake is in an ideal setting on Walker Bay of Leech Lake and just steps from beautiful downtown Walker. Chase on the Lake has been recognized by Minnesota's Hospitality Journal as one of Minnesota's top 5 new hotels. The Walker area provides guests access to experiences unique to the area such as visiting the headwaters of the Mississippi River, a tour of a Winery, play a round of golf, or jump on the trail system right out their front door and enjoy miles of wildlife that is unique to Northern Minnesota. If being on the lake is more your style, head out on the world class fishery that is Leech Lake, whether fishing or just enjoying northern Minnesota wildlife you are sure to enjoy your time on the lake. For those who want an up north retreat without the rustic cabin, Chase on the Lake is your destination. **BRING THE FAMILY AND MAKE A VACATION OUT OF IT!**



Accommodations

Chase on the Lake offers everything from classic hotel rooms, 2 bedroom condo's, to a lakeside 7 bedroom, 5 bathroom cottage that offers an "Up North" getaway feel with the comforts of home you would expect in a luxury resort hotel.

Relax At Copper Door Spa

As an Aveda-Concept spa attendees can relax and unwind with the many services available at the Copper Door Spa. Prior to your service take advantage of the fully equipped locker rooms with steam room. All attendees will receive 10% off Copper Door Spa services.



Relax at The 502

Minnesota Lakeside dining at it's best! This casual high-energy eatery will serve up Northwood's specialties, timeless American dishes and lighter "spa Style" cuisine in a classic arts and crafts setting. The 502 features spectacular views of Leech lake along with patio dining at the water's edge, serving 7 days a week all year long! Happy hour Mon-Fri from 4:02pm to 6:02pm in the 502 bar.



Payment: Checks and Purchase orders must be made **payable to MSSWA**. **If your registration monies are not in receipt of the Registration Committee by June 5th, you will be expected to pay any outstanding balance upon arrival, and pay a late fee of \$65.00 NO EXCEPTIONS!**

Mail your registration and payment (*payable to MSSWA*) to:
Dan Porter/Tony Porter - 762 Meyer St N, Maplewood, MN 55119
1-612-803-2722 mplstonyjoel@gmail.com

A confirmation e-mail will be sent when registration is received.-Please make a COPY of this registration for your own records.

Minnesota School Social Work Association - Summer Institute 2023

EASY REGISTRATION ONLINE at WWW.MSSWA.ORG or Registration Form & Payment (print CLEARLY)

Name: _____ E-mail: _____

Address: _____ City: _____

State: _____ Zip: _____ Phone: _____ School District: _____

Please indicate any dietary concerns/special needs: _____

WELCOME RECEPTION RSVP— Monday, June 12, 2023, 5:30pm to 7:00pm (free to registrants & their guests)

___ I Will Not Attend ___ I Will Attend ___ I Will Bring # ___ of guests

REGISTRATION CAN ALSO BE MADE ONLINE AT:
<https://msswa.wildapricot.org/event-5155215>

Selection	Price	CONFERENCE FEES
	\$300	EARLY BIRD (By April 1st) Full Conference MSSWA Member (Includes up to 15 CEU's)
	\$365	EARLY BIRD (By April 1st) Full Conference <i>Non-Member</i> (Includes MSSWA Membership, & up to 15 CEU's)
	\$350	Full Conference MSSWA Member (Includes up to 15 CEU's)
	\$400	Full Conference <i>Non-Member</i> (Includes MSSWA Membership, & up to 15 CEU's)
	\$200	Full Conference <i>Student/ MSSWA Board Rate</i> (<i>must attach copy of school ID to registration</i>) (Includes MSSWA Membership, & up to 15 CEU's)
	\$400	Related Service Professionals (Includes up to 15 CEU's - Does NOT include MSSWA Membership)
	\$200	One Day Rate, Monday, MSSWA Member (Includes 6 CEU's)
	\$265	One Day Rate, Monday, <i>Non-Member</i> (Includes 6 CEU's)
	\$200	One Day Rate, Tuesday, MSSWA Member (Includes 6 CEU's)
	\$265	One Day Rate, Tuesday, <i>Non-Member</i> (Includes 6 CEU's)
	\$150	One Day Rate, Wednesday, MSSWA Member (Includes 3 CEU's)
	\$200	One Day Rate, Wednesday, <i>Non-Member</i> (Includes 3 CEU's)
	\$18 each	Additional Meal Tickets for family members: _____ # Breakfast _____ # Lunch
	\$65	LATE FEE - Assessed for ANY outstanding balance after June 5th, 2023
	\$ _____	TOTAL AMOUNT ENCLOSED ** (Early bird pricing not accepted unless payment is included with registration) **

Group Discount Available!
Register 6 and get 7th Free (Full Conference Only)! Once 6 are registered and paid for, contact Tony Porter at mplstonyjoel@gmail.com to register your 7th for FREE!

Cancellation Policy:
 Conference registration fees minus a \$60 administration fee per registration will be refunded if cancellation is made in writing to mplstonyjoel@gmail.com by **June 1, 2023**, but registration can be transferred to another attendee at no cost. No refunds issued after June 1, 2023